



imageRUNNER
ADVANCE DX

Advanced Solutions for K-12



Print and Document Management

Information Security

Workflow Automation

Now, more than ever, technology in elementary, intermediate and secondary education must accommodate different learning styles and support educators to close learning gaps. Whether teaching is happening remotely, onsite or in blended environments, hardware and software needs to work seamlessly with multiple educational applications and provide budget-conscious features that let schools stretch their dollars.

BACK TO BASICS

Simplify print and document infrastructure for administrators, teachers, and time-pressed IT staff with imageRUNNER ADVANCE DX and imagePRESS Lite devices. These two series are built on a Unified Firmware Platform offering consistency across the line and regular updates to keep up with evolving needs related to workflow, security, and interoperability features.

Eye-Catching Teaching Materials

Crisp color and optional finishers help create compelling booklets, programs, and more.



Wide Compatibility

Works with PC, MAC®, Chromebook, Microsoft® 365, and Microsoft® Universal Print.



Digitize Paper Documents

Capture, process, and distribute transcripts, permission slips, etc., right at the MFP.



Help Conserve Resources

Energy-efficient and environmentally friendly features.



Support Information Security

Multiple standard and optional security features can assist in protecting data at rest and in transit.¹



Make Printing Easy

Customizable, one-touch workflows and consistent, intuitive interface can help reduce training and support time.



DISCOVER EASY PRINTING

As schools seek to digitally transform the educational experience in response to changing priorities, simplifying print and document management to help reduce the IT burden is key.

Worry-Free MFPs

Recognized by Keypoint Intelligence* as the most reliable A3 brand in the industry—only two minor service calls in the space of five years over 23 devices—Canon's imageRUNNER ADVANCE DX models feature a large, intuitive user interface, built-in training modules, and customizable workflows that are consistent across the platform for minimal learning curve. The imageRUNNER ADVANCE DX line is easy to set up for quick deployment. Devices are simple to maintain with remote support tools and predictive maintenance backed by comprehensive customer support.



Winner of the BLI A3 Line of the Year Award from Keypoint Intelligence for 2016, 2017, 2018, 2020, and 2022.



BLI Reliability Award from Keypoint Intelligence based on devices tested from 2017 through 2021.

Print Anytime, Anywhere

Make Chromebook printing as easy as 1-2-3 with uniFLOW Online. Through Canon's available uniFLOW software, the need to manage local print servers and print drivers is removed with the Universal Output Queue feature so users can easily discover a nearby, preconfigured printer, add the printer, and simply print from any device. Plus, uniFLOW Online complements Universal Print in Microsoft Azure environments. uniFLOW Online administrators can also access complete print, copy, and scan reports in Microsoft, Mac, and Chrome OS environments for supported Canon and non-Canon devices.

Cost-Conscious Paper Use

Paper-based education is integral to learning in the K-12 space but can be costly if it's left unchecked. Activating uniFLOW Online Express, a device-standard** solution, offers convenient user authentication and an information-packed, centralized dashboard that provides insights into print use. Upgrade to an optional uniFLOW Online solution for full print and scan reporting, job routing, cost centers, and the ability to control and manage a whole fleet of devices. This scalable solution can be deployed everywhere, from one school building to a multi-campus school district.

Simplify Printing for Remote Use

Canon imageRUNNER ADVANCE DX devices allow organizations to track all print, scan, and send activity wherever it occurs with the addition of optional uniFLOW Online software. This allows schools to help maintain productivity through weather-related school closures and other unforeseen circumstances. Remote employees simply need an Internet connection to link their supported device to uniFLOW Online, giving them the flexibility of working on- or off-site.



* Keypoint Intelligence conducts hands-on testing of A3, A4, scanner, production, and wide-format devices, as well as software solutions, from all major vendors to identify category leaders.

** Can be activated on any imageRUNNER ADVANCE DX device with the latest firmware.

ADMINISTER SECURITY FEATURES²

From medical records to grades, payroll, and teacher assessments, educational institutions need to secure their data. The Access Management System found on imageRUNNER ADVANCE DX devices lets administrators restrict features based on credentials or pre-defined roles while a standard security feature-set supports Zero Trust* cybersecurity models.

Help Safeguard Sensitive Information

As education environments increasingly become targets for ransomware and phishing attacks, protecting access to MFPs and other devices is standard practice. Through flexible authentication methods, administrators can control access to imageRUNNER ADVANCE DX devices using a PIN, username and password, or card log-in (with the addition of an optional card reader). Administrators can also define whether to allow unregistered users, such as visitors, to log-in as guests and then specify their level of access. The addition of uniFLOW Online allows for authentication integration with Active Directory to help set the right user access levels and enforce internal policies.¹



Standardized Security Features

Multifunction devices can store and transmit confidential or restricted data that should be protected. The imageRUNNER ADVANCE DX line helps provide data protection with robust data erase features that can overwrite previous data on a Hard Disk Drive or with AES 256-bit encryption on a Solid State Drive. Features such as Verify System at Startup, McAfee Embedded Control and SIEM integration help identify device tampering and create whitelists of acceptable applications to help detect and manage breaches quickly and efficiently.^{1,2}



FedRAMP Authorized Solutions



Based on the gold standard for cloud services security, Canon Office Cloud empowers schools to move their print management systems to the cloud securely, efficiently, and cost-effectively. Authorized to operate by the Federal Risk and Authorization Management Program (FedRAMP), Canon Office Cloud helps reduce the capital and operating expenses associated with on-premise servers, software upgrades, and required personnel performing fleet management duties while providing continuously monitored security.**

Canon Office Cloud



Secure Printing

Secure printing and scanning, with log-in at device.



Print Device Management

Set up users, support remote workers, and check firmware.



Fleet Audit and Management

Centrally monitor and report on all print devices.



Document Workflow

Capture and distribute documents.



Cost Control

Help lower print, overhead, and maintenance costs.

¹ See individual product brochures for a complete list of standard and optional security features, activation, requirements, and UFP version compatibility.

* Zero Trust is a security framework that assumes all users, both inside or outside an organization's network, must be authenticated, authorized, and continuously validated before being granted or keeping access to applications and data.

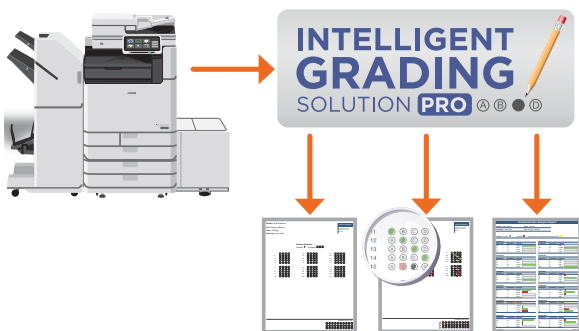
** Subscription to Canon Office Cloud services subject to verification of qualifications.

WORK SMART

As K-12 schools are increasingly called upon to pivot to the demands of parents, students, and administrators, automating repetitive processes can free up valuable staff time and contribute to a reduction in errors that ultimately helps improve the educational experience.

Making the Grade

The Intelligent Grading Solution (IGS Pro),* a cloud-based solution, provides educators with the flexibility to create and grade tests and generate detailed, analytical reports. These can come directly from compatible imageRUNNER ADVANCE DX systems as well as through the cloud, allowing educators to quickly gain insight into student performance, provide timely feedback, and make adjustments to support scholastic achievement as needed.



Supporting Efficient Workflows



Managing student registration, IEPs, report card reviews, and teacher assessments are processes that can be streamlined

with Therefore™, Canon's information management, workflow, and business analytics platform. Working in tandem with existing Student Information Management Systems or as a stand-alone solution, Therefore™ enables everything from concurrent approvals and automated reminders to the creation of analytic reports that can identify student and staff challenges. Dynamic reports can even be shared across teachers and departments to support assessment of student learning habits.

The Finishing Touch

Monochrome and color imageRUNNER ADVANCE DX and imagePRESS Lite models are available with a host of finishing options that support the creation of flyers, trifold brochures, booklets, newsletters, and programs for school functions, classroom activities, extracurricular clubs, and parent communications.



Canon U.S.A., Inc. is an authorized reseller of these Therefore™ solutions. Certain limitations may apply. Please see the Therefore™ 2022 Installation Manual for further information.

* Subscription to a third-party cloud service required. Subject to third-party cloud service provider's Terms and Conditions.

SUPPORT THE ENVIRONMENT

Schools have an obligation to support sustainable practices for a better future. Canon's imageRUNNER ADVANCE DX solutions can help these environmental efforts via energy-efficient print management features.

Energy-Efficient Technology

Canon's innovative technologies are designed to minimize paper, toner, and energy consumption to help reduce costs, save time, and increase productivity. These include advanced energy-efficient technologies such as the following:

- ENERGY STAR® qualified and EPEAT registered products
- Reduced warm-up times and heat usage
- One-watt Sleep mode
- Recycle-conscious designs
- Toner cartridge recycling
- Compact and low-weight products
- Staple-free stapling

User-Friendly Design

Canon's products are designed to be user-friendly to help remove technology barriers. Convenient accessibility features include intuitively designed control panels, easy-to-access paper supply and toner replenishment areas, multiple languages, and optional voice operation and guidance functions among others.



¹ Canon products offer certain security features, yet many variables can impact the security of your devices and data. Nothing herein should be construed as legal or regulatory advice concerning applicable laws. Canon does not warrant that use of its features will prevent security issues. Some security features may impact functionality/performance; you may want to test these settings in your environment. All features discussed may not apply to all models and/or products and may be optional; please check with your Canon Authorized Dealer for details.

² Canon U.S.A. does not provide legal counsel or regulatory compliance consultancy, including without limitation, Sarbanes-Oxley, HIPAA, GLBA, Check 21, or the USA Patriot Act. Each customer must have its own qualified counsel determine the advisability of a particular solution as it relates to regulatory and statutory compliance. Subscription to a third-party cloud service required. Subject to third-party cloud service provider's Terms and Conditions.

See individual product brochures for a complete list of standard and optional features, activation, requirements, and UFP version compatibility.

Canon

usa.canon.com/advancedsolutionsforeducation



ENERGY STAR and the ENERGY STAR mark are registered U.S. marks. Canon, imageRUNNER, and imagePRESS are registered trademarks of Canon Inc. in the United States and may also be registered trademarks or trademarks in other countries. Therefore™ is a registered trademark of Therefore™ Corporation. uniFLOW is a registered trademark of NT-ware Systemprogrammierung GmbH. All other referenced product names and marks are trademarks of their respective owners. Neither Canon Inc. nor Canon U.S.A., Inc. represents or warrants any third-party product or feature referenced hereunder. Specifications and availability subject to change without notice. Not responsible for typographical errors. ©2022 Canon U.S.A., Inc. All rights reserved.

1222R3-VMEDUK12-PDF-IH



Scan QR code for more information about Canon's Advanced Solutions for Education.

