



imageRUNNER
ADVANCE DX

Advanced Solutions for Higher Education



Print and Document Management

Information Security

Workflow Automation

As colleges, universities, and other continuing education organizations learn to adapt to a wider mix of remote, hybrid, and onsite learning environments, their technology needs to adjust accordingly. The proliferation of educational applications, the need for personalized learning, and a commitment to student-friendly processes means that cost-effective and flexible hardware and software solutions are more important than ever.

TECHNOLOGY THAT TRANSFORMS

Establishing a print and document infrastructure that's cost-effective, incorporates security features, and can meet the changing needs of staff, faculty, students, IT, and administrators is essential. Built on a Unified Firmware Platform that's regularly updated, imageRUNNER ADVANCE DX and imagePRESS Lite devices can meet your needs today and tomorrow.

Cloud- and Mobile-Ready

Scan, print, and send to and from cloud repositories via compatible mobile devices.



Low-Touch Printing

Scan, print, and send without touching the MFP through the Canon Print Business App.



Digitize Paper Documents

Capture, process, and distribute transcripts, financial forms, etc., right at the MFP.



Help Conserve Resources

Energy-efficient and environmentally friendly features.



Support Information Security

Multiple standard and optional security features can assist in protecting data at rest and in transit.¹



Make Printing Easy

Customizable, one-touch workflows and consistent, intuitive interface can help reduce training and support time.



RETHINK PRINT INFRASTRUCTURE

As schools accelerate their adoption of cloud services to serve blended on-campus and remote campus populations, Canon's solutions can help conserve IT resources and simplify print and document management.

Simplify the User Experience and MFP Management



Recognized by Keypoint Intelligence for outstanding reliability,* Canon's comprehensive portfolio of award-winning imageRUNNER ADVANCE DX models feature a large, intuitive user interface, built-in training modules, and customizable workflows that are consistent across the platform for minimal learning curve. The imageRUNNER ADVANCE DX line is easy to set up for quick deployment and simple to maintain with remote monitoring tools and predictive maintenance backed by comprehensive customer support.

Provide a Modern Printing Environment

Universities and colleges are comprised of multiple departments, teaching faculties, staff, and student hubs that have unique workflow needs. Canon's available uniFLOW Online software can simplify IT by eliminating the need to manage local print servers and print drivers with its Universal Output Queue feature so users can easily discover a nearby, preconfigured printer, add the printer and simply print from any device. Plus, uniFLOW Online complements Universal Print in Microsoft Azure environments. Administrators can also get a full accounting of print, copy, and scan activity in Microsoft, Mac, and Chrome OS environments for supported Canon and non-Canon devices.

Enable Printing Any Time, Anywhere, From Any Device

Mobile printing on campus is a must. With peer-to-peer and cloud-based mobile print and scanning solutions, such as the Canon PRINT Business app and EFI™ PrintMe,** authorized users can quickly send files to any networked MFP from their smartphones or tablets and release the print job at the device. With the M600 Self-Serve Station, students can print from USB drives or from virtually any cloud account or remote location using mobile devices.

Compatible with Campus Systems

With applications built on Canon's Multifunctional Embedded Application Platform (MEAP), schools can easily link with compatible cost-recovery systems to capture and track device-related costs. Administrators can add and configure devices and print services, set or adjust price rates, and integrate with campus card payment systems—such as Blackboard, Pharos, Cardsmith, CBORD, and even PayPal—allowing printing costs to be deducted directly from students' accounts. Canon's uniFLOW Online also supports student account printing.



Pharos Systems



Encourage Cost-Conscious Printing Practices

Canon's solutions have helped many educational institutions to better manage print output and influence responsible printing behavior. uniFLOW Online Express, a device-standard▲ solution, offers convenient user authentication, and an information-packed, centralized dashboard with insights into print activity. Upgrade to an optional uniFLOW Online solution for full reporting, job routing, and the ability to control and manage a whole fleet of devices. The scalable solution can be tailored to provide flexibility for any size or type of environment.



* Keypoint Intelligence conducts hands-on testing of A3, A4, scanner, production, and wide-format devices as well as software solutions from all major vendors to identify category leaders. BLI Reliability Award from Keypoint Intelligence based on devices tested from 2017 through 2021.

** Subscription to a third-party cloud service required. Subject to third-party cloud service provider's Terms and Conditions.

▲ Can be activated on any imageRUNNER ADVANCE DX and imagePRESS Lite device with the latest firmware.

REIMAGINE DATA SECURITY²

From student health and financial information to grades, payroll, and employee reviews, educational institutions need to limit access to sensitive data. The Access Management System found on imageRUNNER ADVANCE DX devices lets administrators restrict features based on credentials or pre-defined roles while a standard feature-set supports Zero Trust* cybersecurity models.

Take Steps to Help Protect Personal Data

Confidentiality of Personally Identifiable Information (PII) and other sensitive data is a priority. Flexible authentication methods allow administrators to control who has access to the MFP using a PIN, username, and password, or card log-in (with the addition of an optional card reader). Administrators can also define whether to allow unregistered users, such as visitors, to log-in as guests and then specify their level of access. The addition of uniFLOW Online allows for authentication integration with Active Directory to help set the right user access levels and enforce internal policies.^{1,2}



Help Safeguard Sensitive Data

Multifunction devices can store and transmit confidential or restricted data that should be secured. The imageRUNNER ADVANCE DX line helps provide data protection with robust data erase features that can overwrite previous data on a Hard Disk Drive or with AES 256-bit encryption on a Solid State Drive. Features such as Verify System at Startup, McAfee Embedded Control, and SIEM integration help identify device tampering and create whitelists of acceptable applications to help detect and manage breaches quickly and efficiently.^{1,2}



Support Compliance

Schools must provide their students, faculty, and staff with the right levels of access to technology while also complying with state and federal regulations, such as FERPA, HIPAA, COPPA, and IDEA. Canon offers software solutions that help improve workflows, support Zero Trust* cybersecurity models, and establish document retention policies that align with established compliance efforts.^{1,2}

FedRAMP Authorized Print Security



Based on the gold standard for cloud services security, Canon Office Cloud empowers educational institutions that handle data subject to government rules and regulations to move their print management systems to the cloud securely, efficiently, and cost-effectively. Authorized to operate by the Federal Risk and Authorization Management Program (FedRAMP), Canon Office Cloud helps reduce the capital and operating expenses associated with on-premise servers, software upgrades, and required personnel performing fleet management duties while providing continuously monitored security.**

Canon Office Cloud**



Secure Printing

Secure printing and scanning, with log-in at device.



Print Device Management

Set up users, support remote workers, and check firmware.



Fleet Audit and Management

Centrally monitor and report on all print devices.



Document Workflow

Capture and distribute documents.



Cost Control

Help lower print, overhead, and maintenance costs.

See individual product brochures for a complete list of standard and optional security features, activation, requirements, and UFP version compatibility.

* Zero Trust is a security framework that assumes all users, both inside or outside an organization's network, must be authenticated, authorized, and continuously validated before being granted or keeping access to applications and data.

** Subscription to Canon Office Cloud services subject to verification of qualifications.

REINVIGORATE YOUR WORKFORCE

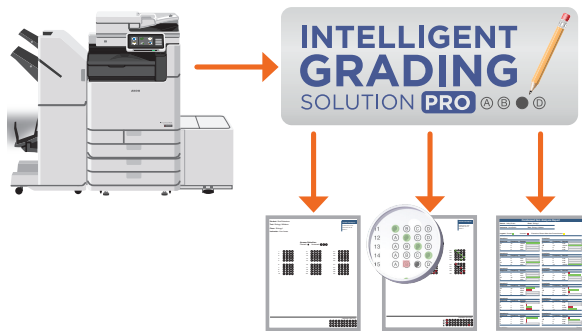
Canon's optional workflow automation solutions for higher education can help minimize time spent on manual, repetitive tasks and also help reduce the margin of human error, which has real-world consequences for both students and administrators.

Foster Productive Processes

Therefore™ Schools are tasked with managing various student and administrative records through admission, review, and financial payment processes. Streamline workflows with asynchronous approvals that advance documents only when all relevant information is received. Therefore™—Canon's information management, workflow, and business analytics platform—is a flexible solution that can be designed and implemented to support these processes and more.

Expedite the Testing and Grading Process

The Intelligent Grading Solution (IGS Pro),* a cloud-based solution, provides educators with the flexibility to create and grade tests and generate detailed, analytical reports via compatible imageRUNNER ADVANCE DX systems allowing educators to quickly gain insight into student performance, provide timely feedback, and make adjustments to support overall achievement.



Simplify Printing for Distributed Workforces

Canon imageRUNNER ADVANCE DX and imagePRESS Lite devices give organizations the ability to track all print, scan, and send activity wherever it occurs with the addition of optional uniFLOW Online software. This allows educational institutions the flexibility to help maintain productivity through weather-related school closures and other unforeseen circumstances. Remote employees simply need an Internet connection to link their supported device to uniFLOW Online, giving them the flexibility of working in the office or at home.



Canon U.S.A., Inc. is an authorized reseller of these Therefore™ solutions. Certain limitations may apply. Please see the Therefore™ 2022 Installation Manual for further information.

* Subscription to a third-party cloud service required. Subject to third-party cloud service provider's Terms and Conditions.

INVEST IN SUSTAINABLE, ACCESSIBLE SOLUTIONS

Featuring universal design and a focus on environmental responsibility throughout the product life cycle, Canon's imageRUNNER ADVANCE DX and imagePRESS Lite solutions can help support accessibility and sustainability goals in higher education.

A Commitment to Sustainability

Canon's innovative technologies are designed to minimize paper, toner, and energy consumption to help reduce costs, save time, and increase productivity. These include advanced energy-efficient technologies such as the following:

- ENERGY STAR® qualified and EPEAT registered products
- Reduced warm-up times and heat usage
- One-watt Sleep mode
- Recycle-conscious designs
- Toner cartridge recycling
- Compact and low-weight products
- Staple-free stapling

User-Friendly Design

Canon's products are designed to be user-friendly to help remove technology barriers. Convenient accessibility features include intuitively designed control panels, easy-to-access paper supply and toner replenishment areas, multiple languages, and optional voice operation and guidance functions among others.



¹ Canon products offer certain security features, yet many variables can impact the security of your devices and data. Nothing herein should be construed as legal or regulatory advice concerning applicable laws. Canon does not warrant that use of its features will prevent security issues. Some security features may impact functionality/performance; you may want to test these settings in your environment. All features discussed may not apply to all models and/or products and may be optional; please check with your Canon Authorized Dealer for details.

² Canon U.S.A. does not provide legal counsel or regulatory compliance consultancy, including without limitation, Sarbanes-Oxley, HIPAA, GLBA, Check 21, or the USA Patriot Act. Each customer must have its own qualified counsel determine the advisability of a particular solution as it relates to regulatory and statutory compliance. Subscription to a third-party cloud service required. Subject to third-party cloud service provider's Terms and Conditions.

See individual product brochures for a complete list of standard and optional features, activation requirements, and UFP version compatibility.

Canon

usa.canon.com/advancedsolutionsforeducation



ENERGY STAR and the ENERGY STAR mark are registered U.S. marks. Canon, imageRUNNER, imagePRESS, and MEAP are registered trademarks of Canon Inc. in the United States and may also be registered trademarks or trademarks in other countries. Therefore™ is a registered trademark of Therefore™ Corporation. uniFLOW is a registered trademark of NT-ware Systemprogrammierung GmbH. All other referenced product names and marks are trademarks of their respective owners. Neither Canon Inc. nor Canon U.S.A., Inc. represents or warrants any third-party product or feature referenced hereunder. Specifications and availability subject to change without notice. Not responsible for typographical errors.

©2022 Canon U.S.A., Inc. All rights reserved.

1222R3-VMEDUHE-PDF-IH



Scan QR code for more information about Canon's Advanced Solutions for Education.

